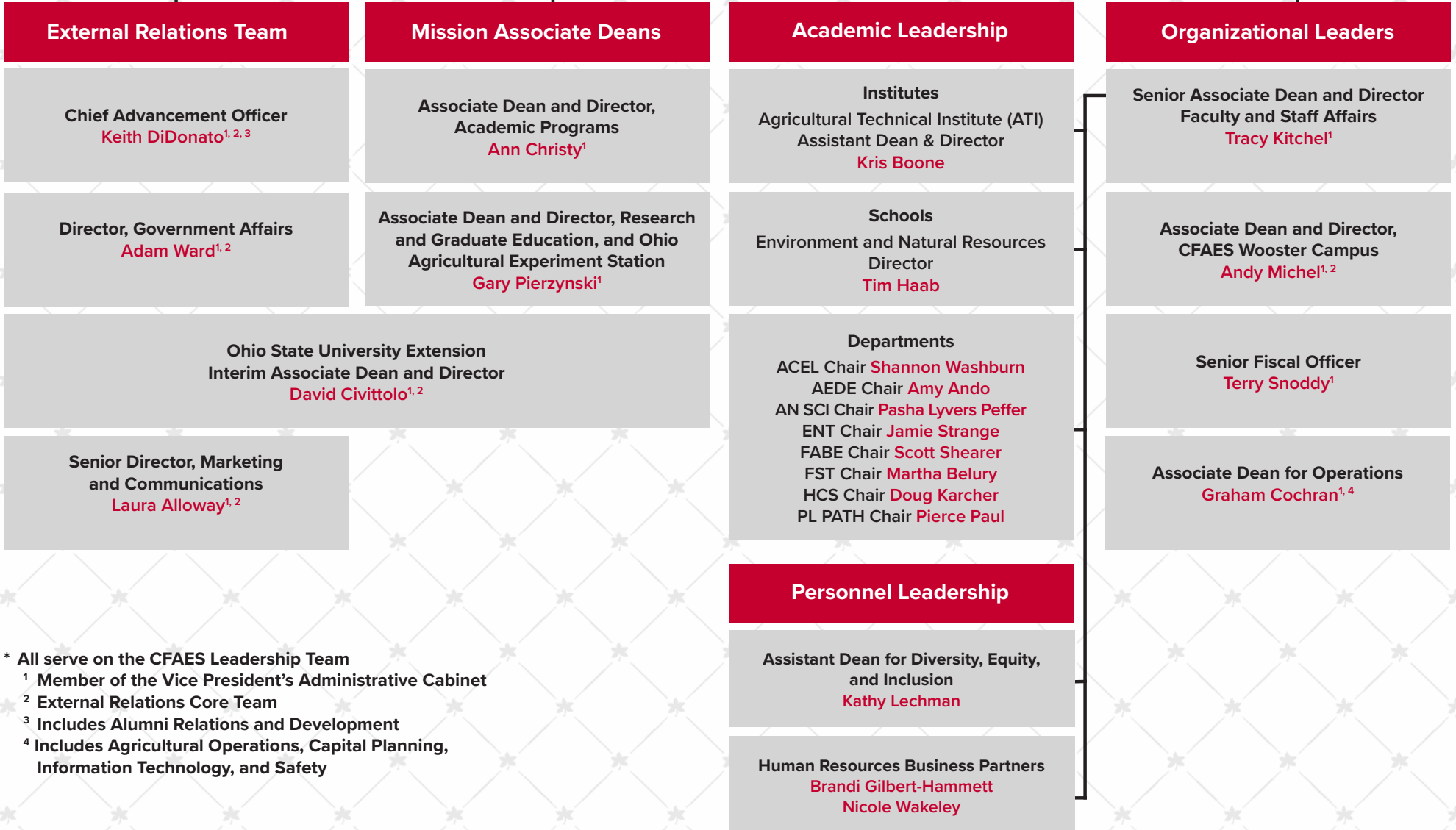


**Vice President for Agricultural Administration
 and Dean**
Cathann A. Kress¹

Executive Assistant - Pamela Faust
Chief of Staff - Lori Bowman^{1,2}
Executive Communications - Lora Vest²



* All serve on the CFAES Leadership Team
¹ Member of the Vice President's Administrative Cabinet
² External Relations Core Team
³ Includes Alumni Relations and Development
⁴ Includes Agricultural Operations, Capital Planning, Information Technology, and Safety