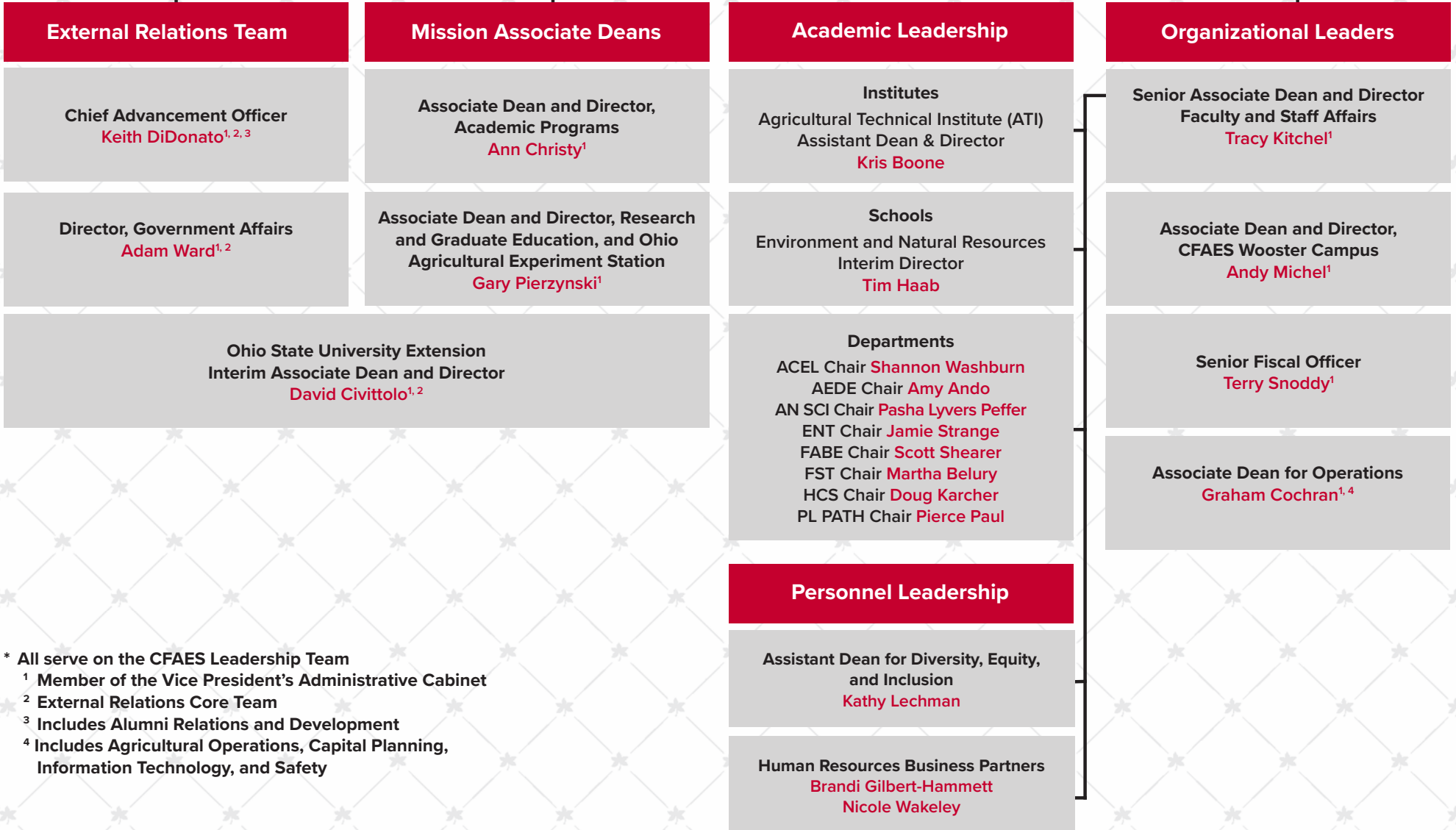


**Vice President for Agricultural Administration  
 and Dean**  
**Cathann A. Kress<sup>1</sup>**

**Executive Assistant - Lynette Arner**  
**Chief of Staff - Lori Bowman<sup>1,2</sup>**  
**Strategic Communications - Lora Vest<sup>2</sup>**



\* All serve on the CFAES Leadership Team

<sup>1</sup> Member of the Vice President's Administrative Cabinet

<sup>2</sup> External Relations Core Team

<sup>3</sup> Includes Alumni Relations and Development

<sup>4</sup> Includes Agricultural Operations, Capital Planning, Information Technology, and Safety